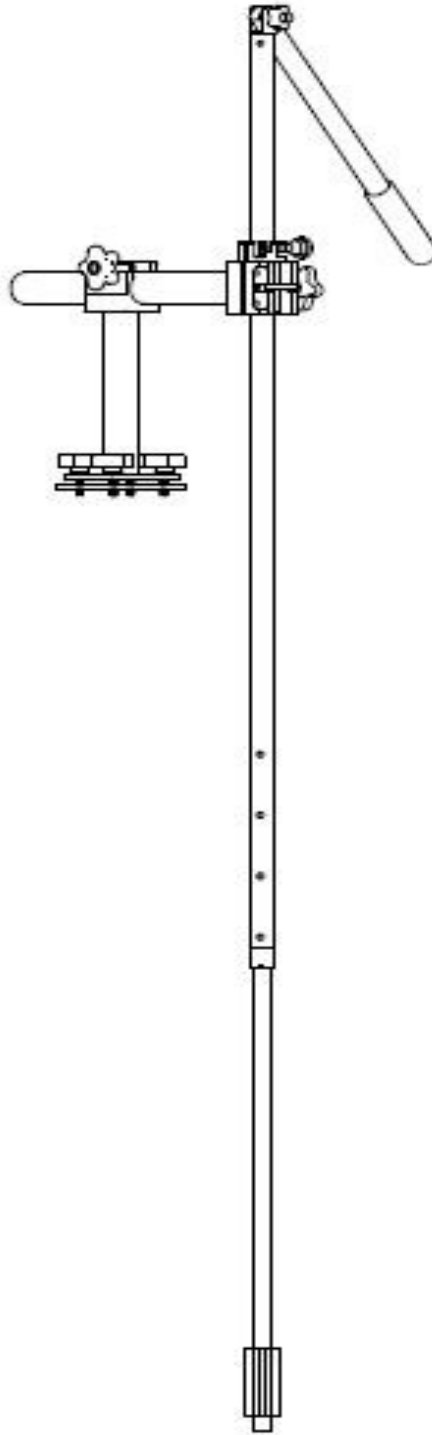




Cabela's

BPS Transducer Pole

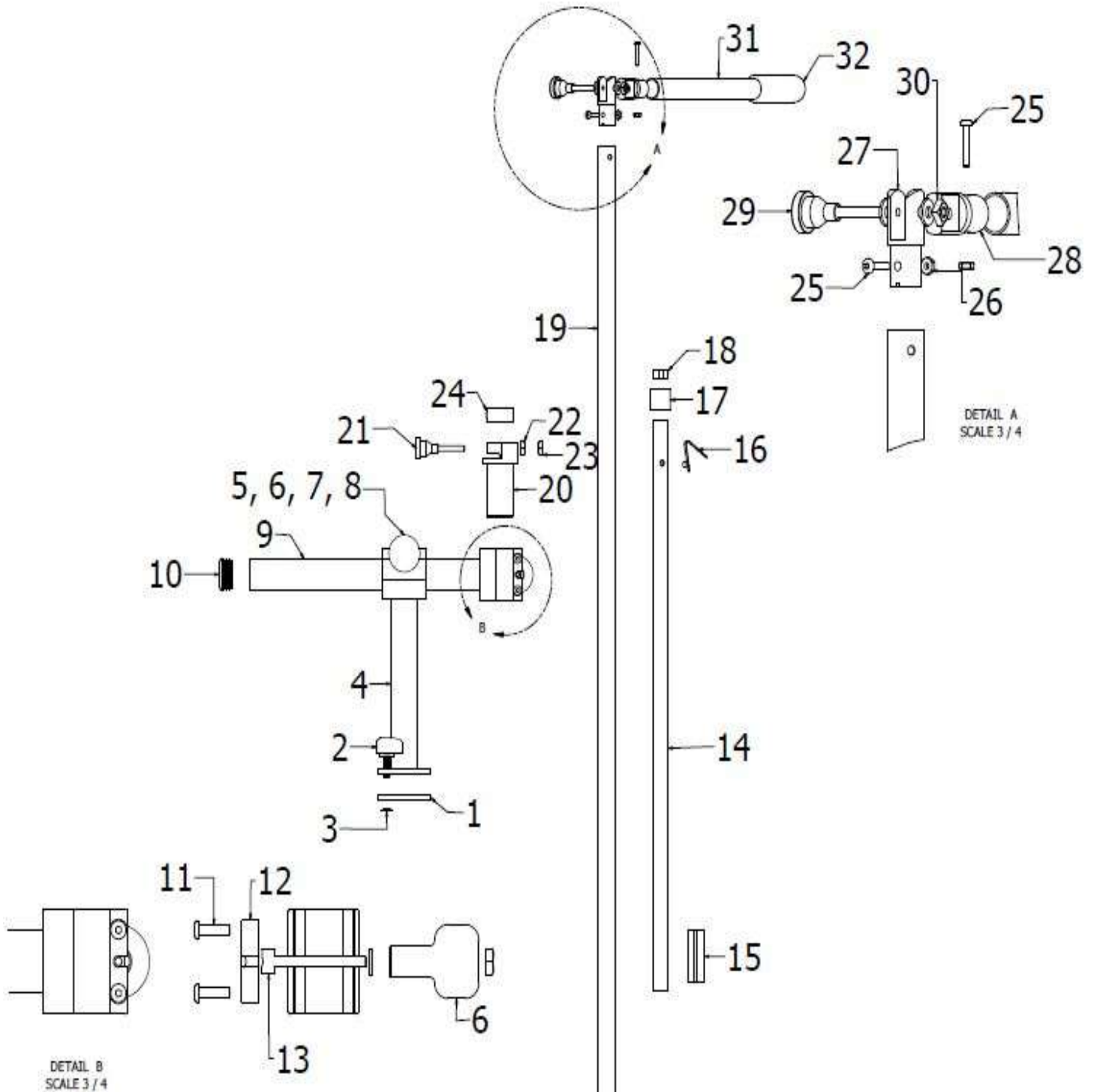




Cabela's

BPS Transducer Pole

Parts List





BPS Transducer Pole

Parts

Item #	Description	Qty	Size	Part Number
1	Deck Base Plate	1		BDBPS1001
2	Base Knob	4		BDBPS1002
3	Push Nut	4		BDBPS1029
4	Vertical Riser	1		BDBPS1005
5	Carriage Bolt	1	1/4-20	BCGSS1/4C3
6	Clamp Knob	2		BDBPS1015
7	Plastic Washer	4	1/4-20	BDBPS1016
8	Stainless Steel Washer	6	1/4-20	WFLSS1/4
9	Horizontal Support	1		BDBPS1008
10	Tube Cap	1		BDBPS1028
11	Button Head Screws	2	1/4-20	BSCSSS1/4C.75
12	Retainer	1		BDP1024
13	Knob Stud Tee	1		BDBPS1011
14	PVC Extension	1		BDP1037
15	Transducer Spacer	1		BDP1038
16	Snap Button	2		B-134
17	Compression Nut	1		CN1001
18	Compression Ring	1		CR1001
19	Main Pole	1		MP1001
20	Pole Clamp Sleeve	1		BDBPS1020
21	Pole Clamp Knob	1		BDP1035
22	Square Nut	1	1/4-20	NSQSS1/4C
23	Thin Lock Nut	1	1/4-20	ESN79NTE040
24	Pole Stop	1		BDP1036
25	Button Head Screws	2	10-24	BSCSSS10C1.25
26	Lock Nut	2	10-24	ESN79NM04
27	Female Hinge	1		BDBPS1025
28	Male Hinge	1		BDBPS1026
29	Handle Knob	1		BDBPS1007
30	Thick Lock Nut	1	1/4-20	ESN79NE040
31	Handle Tube	1		HP1001
32	Comfort Grip	1		BDBPS1027



BPS Transducer Pole

Assembly

The BPS Transducer Pole comes mostly assembled from the factory. Minor assembly is required to complete the product. We suggest that this product is fully assembled and fitted up to your boat before mounting the base. Be sure the product has the proper clearance before mounting permanently. Please follow the step-by-step instructions below to fully assemble your product.

Step 1.

Unbox Vertical Riser (A) and Horizontal Support (B). Loosen Clamp Knob (C) in Figure 1 below. Slide Horizontal Support (B) into the clamp portion of Vertical Riser (A) and adjust arm to clear gunnel. Tighten Clamp Knob (C) firmly to secure Horizontal Support (B) in place. Caution! Do not overtighten Clamp knob (C) when the Horizontal Support tube is not in place.

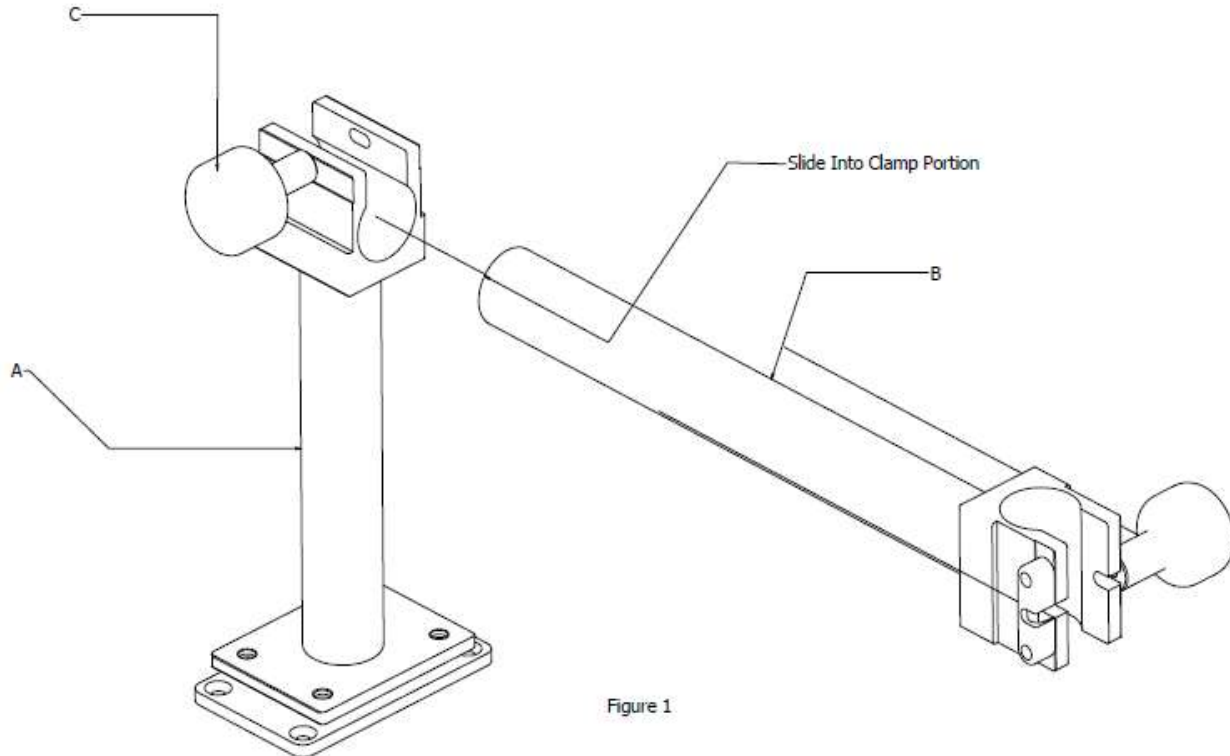


Figure 1

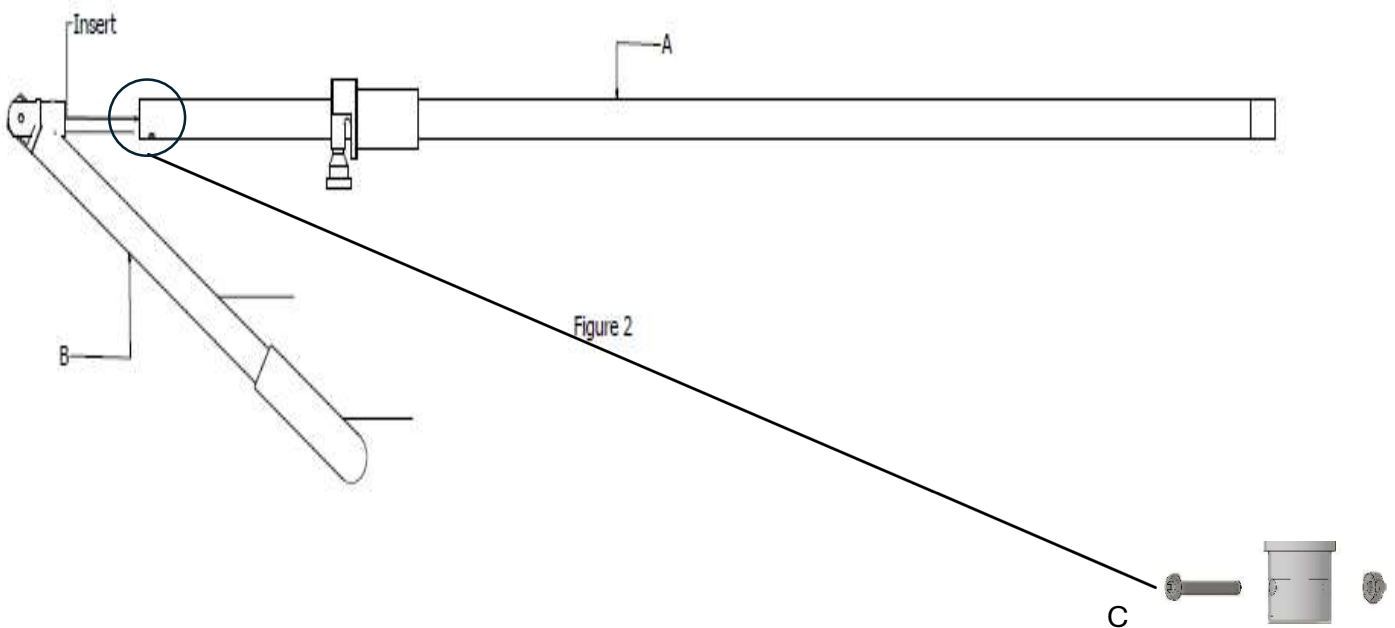


Cabela's

BPS Transducer Pole

Step 2.

Unbox the Main Pole (A) and the Handle Tube (B) as shown in Figure 2. Remove 10-24 bolt (C) from the Main Tube (A). Insert Handle Tube (B) into Main Pole (A) and align mounting holes. Insert 10-24 bolt (C) through Main Pole (A) and Handle Tube (B). Place and tighten Lock Nut (D) until tight.

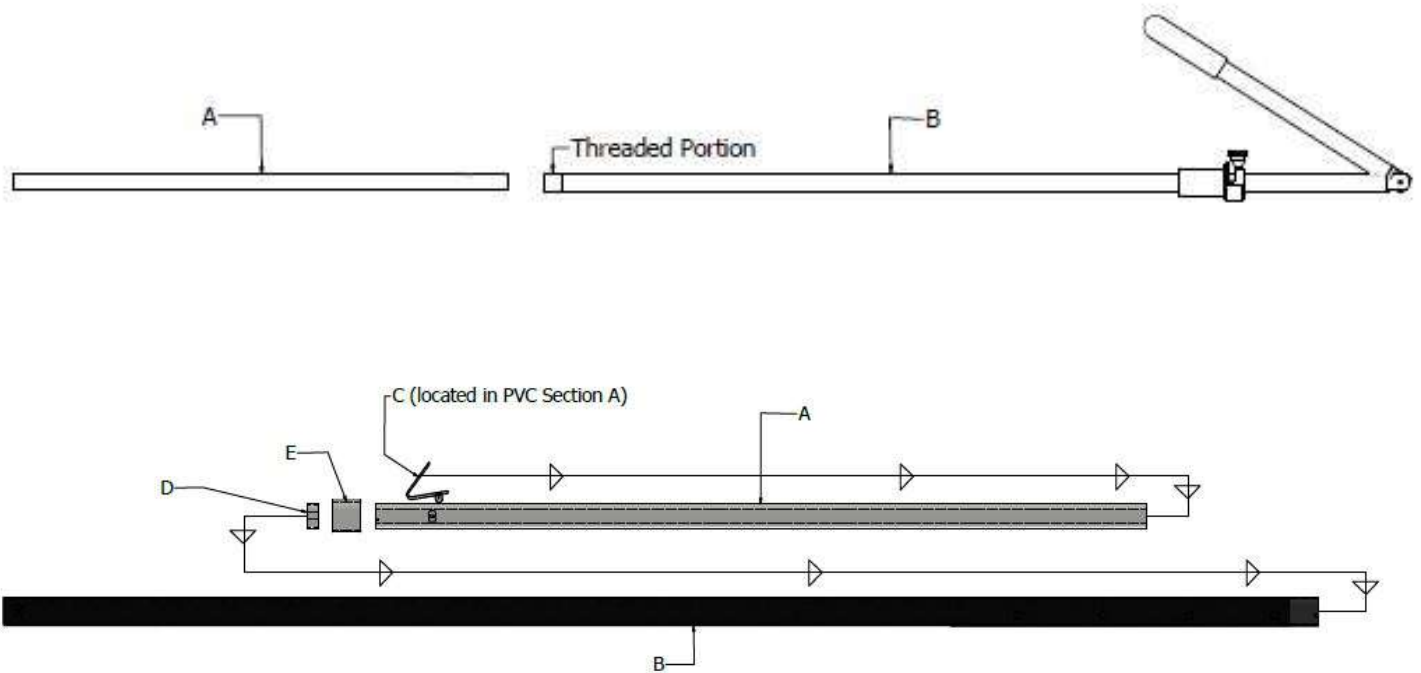




BPS Transducer Pole

Step 3.

Unbox the PVC Extension (A) and grab assembled pole portion (B) from Step 2. As shown in Figure 3, slide PVC Extension (A) into the threaded portion of pole assembly (B). Align the Snap Button (C) with the adjustment holes in pole portion (B). Set to preferred length. Once Snap Button (C) is engaged, slide the plastic Compression Ring (D) and Compression Nut (E) up to the threads. The plastic Compression Ring (D) needs to remain against the front of pole portion (B) below the threads and then slide Compression Nut (E) over the Compression Ring (D) and thread to pole portion (B). Tighten firmly.





BPS Transducer Pole

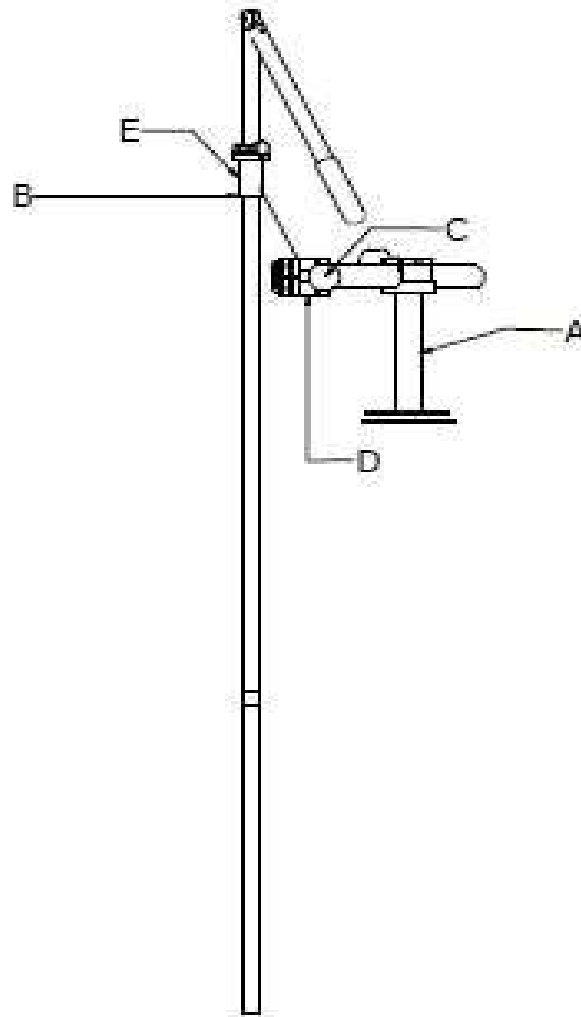
Step 4.

Using mounting assembly (A) and fully assembled pole (B), affix the assembled pole (B) into the mounting assembly (A). Loosen Clamp Knob (C) completely and swing open and away as shown in Figure 4. Insert assembled pole (B) into Clamp (D). The Pole Sleeve (E) needs to fit firmly into the Clamp (D). Be sure Pole Sleeve (E) is seated fully to Clamp (D). Swing Clamp Knob (C) closed and tighten firmly so that Pole Sleeve (E) cannot rotate freely. Caution! Do not overtighten Clamp Knob (C) when the Pole Sleeve (E) is not present.



Cabela's

BPS Transducer Pole



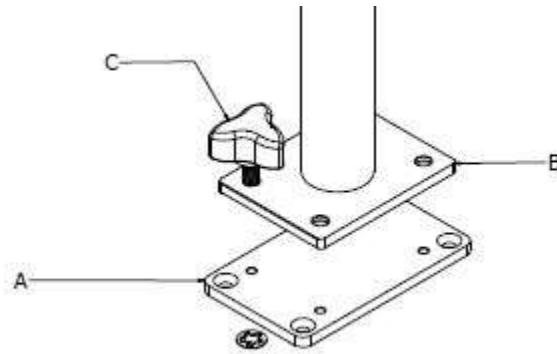
Step 5.

Now that the Transducer Pole is fully assembled, the mounting location on your boat needs to be determined. Securely mount the Deck Base Plate (A) in Figure 5 in the desired location. You will need to detach the Deck Base Plate (A) from the Pole Mount Assembly (B). Loosen the 4 Base Knobs (C) to remove Deck Base Plate (A).



Cabela's

BPS Transducer Pole



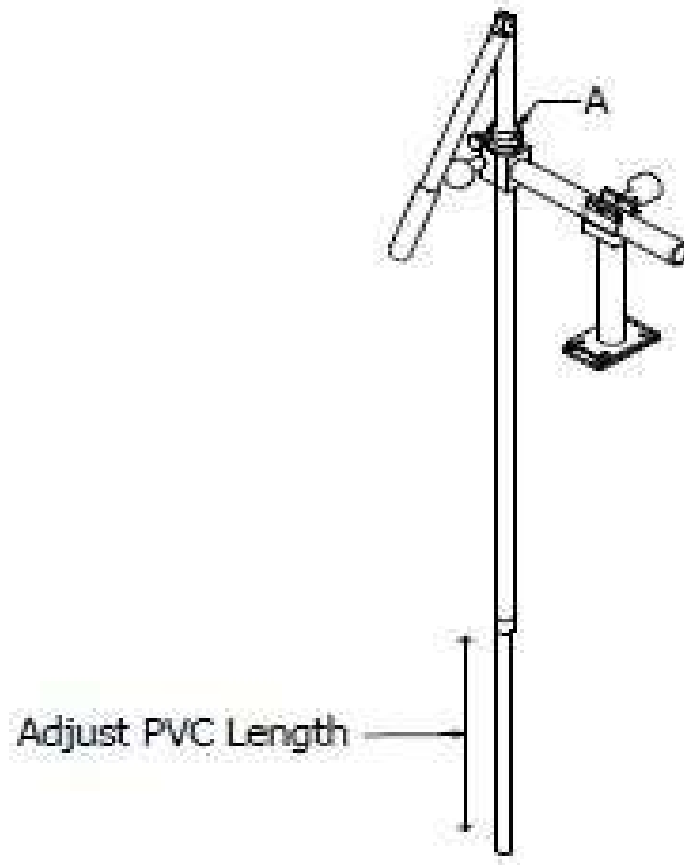
Step 6.

Once your Deck Base Plate is firmly mounted, reattach the Pole Mount Assembly. Adjust the Pole Stop (A) to set the pole depth to preferred height. Note: The PVC Extension may be adjusted as well using the Snap Button to get the pole to desired height for your boat.



Cabela's

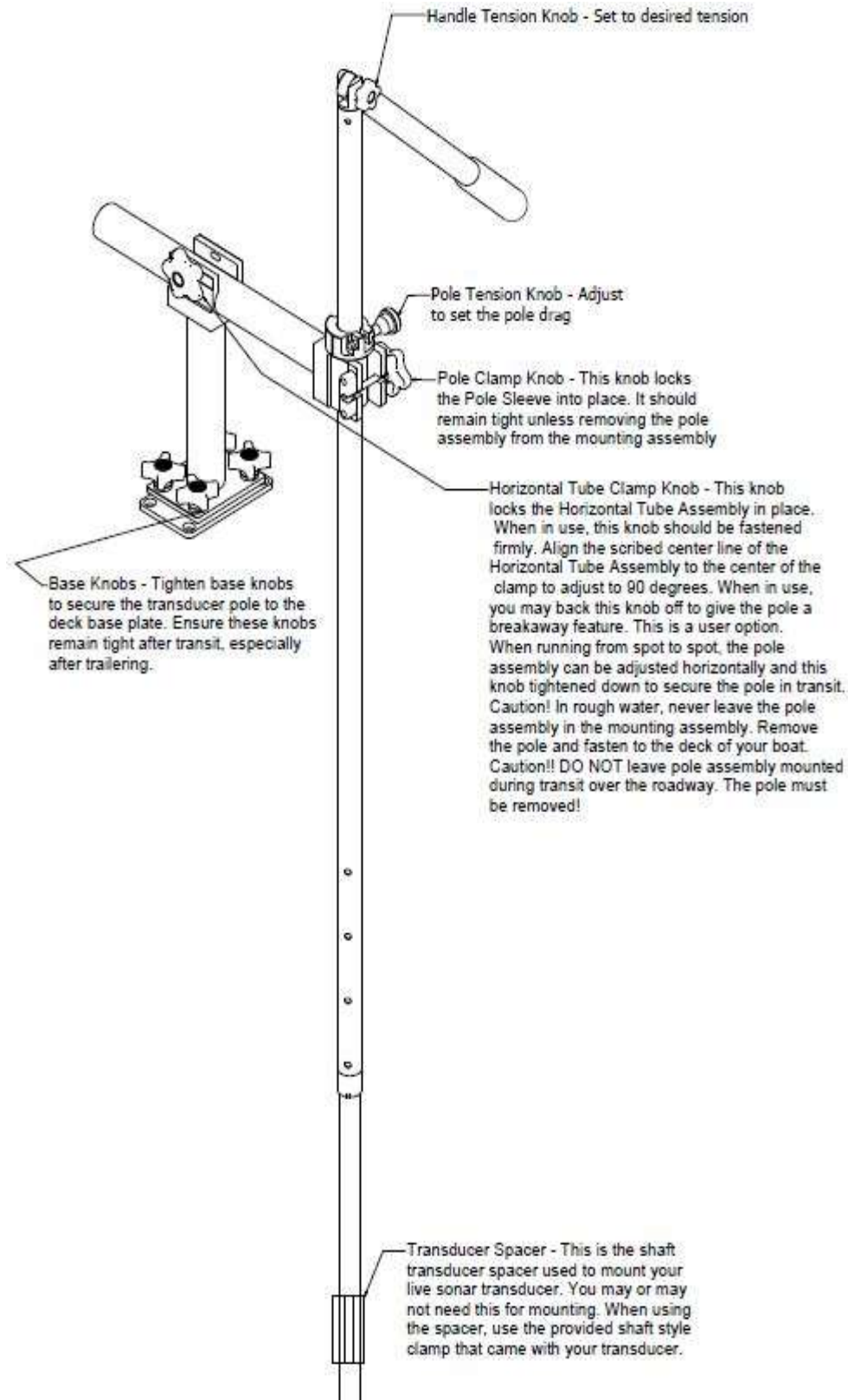
BPS Transducer Pole





Cabela's

BPS Transducer Pole





Cabela's

BPS Transducer Pole