



If you use live or cut bait from boat, bank, or kayak, this reel will change how you fish. With your bail closed you can pre-set tension on the Free Spin Drag System so a fish can run with your bait until you engage the handle to bury the hook. All the features of a world-class saltwater spinning reel are here:

- Corrosion-resistant Stainless Steel Bearings keep out the elements for smooth operation
- Powerlock™ Instant Anti-Reverse eliminates "back slop" in your retrieve
- Worm Gear Oscillation System keeps line laying evenly on the spool
- Extra-strong Stainless Steel Mainshaft prevents flex, and keeps gears meshing properly
- Braid-Ready aluminum spool.
- High-strength Sealed Composite Body keeps out saltwater

Reel Specifications

Model	Bearings	Weight (oz./g)	Max Drag (lbs./kg)	Line Capacity mono/braid (lb./yds./kg/m)	IPT	Gear Ratio
SST-4000	5+1	17.6	39	8/340, 10/295, 12/240 15/665, 20/505, 30/295	35	4.9:1
SST-6000	5+1	17.7	39	10/345, 12/285, 14/240 30/400, 40/345, 50/240	37.4	4.9:1
SST-8000	5+1	20.4	44	14/330, 17/235, 20/200 50/330, 65/255, 80/235	41.3	4.9:1

Features and Operations Instructions

Salt Striker reels actually feature 2 spool tension systems. The first is your conventional drag system for fish fighting. That adjustment is right up front where you expect it to be. The coolest feature of these reels however, is the Free Spin System. This separate system allows a fish to pick up your bait and run with the bail closed. It's even cooler than a conventional reel with a clicker and free spool, because you can pre-set the FREE SPIN tension perfectly.

To Pre-Set the Free Spin Tension:

1. Engage the Free Spin Lever at the rear of the reel, by pulling the lever back.
2. Adjust the amount of outgoing tension ("Free Spin") on the spool with the Free Spin drag knob at the rear of the reel. To loosen, turn the knob counter-clockwise. To tighten, turn the knob clockwise.
3. To disengage the Free Spin System, and set the hook, just crank the handle. The internal trip will re-set the Free Spin Lever.

Fishing Reel Tips and Maintenance

Tips

The following suggestions will help you to get peak performance from your new High Tide spinning reel.

1. One challenge of using a spinning reel is dealing with line twist. Line twist is the most common cause of spinning reel tangles. In order to minimize line twist when fighting a fish, do not reel against the drag. Reeling against the drag does not bring the fish any closer to you. When line is being pulled off the reel, allow the drag to do its job. Once the fish stops running, pull the fish toward you by raising the rod tip and reeling up the gained line.
2. Keep your reel fully spooled. This maximizes casting distance and the amount of line gained per turn of the handle.

Maintenance

1. Periodic cleaning and maintenance is required for continued peak performance. After each use, tighten down the drag knob and wash your reel with a gentle, freshwater spray to remove salt deposits. Do not use a forceful spray as this can force water and dirt into the reel. Wipe off excess water, and allow the reel to air dry. After drying, loosen the drag knob to proper adjustment.
2. Reels require lightweight grease and oil to be applied periodically. The warmer the climate you fish in, the more frequently these lubricants should be applied. Oil and grease should be used sparingly; too much can have a negative impact on reel performance. There are lightweight oils and greases made specifically for fishing reels that can be found at basspro.com



Bass Pro Shops/Cabela's Fishing Reels: Limited Warranty

Bass Pro Shops® will repair or replace (at our discretion) any Offshore Angler™ reel which proves to be defective in workmanship or materials within 1 year from the original date of purchase. You must save your dated sales receipt for warranty validation. This warranty gives you specific legal rights, and you may have other rights which vary from state to state or province to province.

For reels purchased through Bass Pro Shops/Cabela's catalogs or Bass Pro Shops/Cabela's online:

- **For reel replacement only:** Return your reel postage prepaid with your dated sales receipt to the Return Center address listed on your receipt.
- **For reel repair only:** Return your reel postage prepaid with a copy of your dated sales receipt as proof of purchase and warranty validation to the Outdoor World Rod & Reel Repair® address below.

For reels purchased through Bass Pro Shops/Cabela's retail locations:

- **For reel replacement only:** Return your reel (postage prepaid if sending by mail) along with your dated sales receipt to the store from which it was purchased.
- **For reel repair only:** Return your reel postage prepaid with a copy of your dated sales receipt as proof of purchase and warranty validation to the Outdoor World Rod & Reel Repair address below.

Outdoor World Rod & Reel Repair
2300 E. Turner, Suite M
Springfield, MO 65803

This warranty does not cover lost parts, malfunctions, or damage due to abuse, accidents, or normal wear. Failure to clean, lubricate, and provide reasonable and necessary maintenance will void the warranty. Repairs needed to your reel due to abnormal use or modification, or after warranty expiration, are available for a reasonable charge from Outdoor World Rod & Reel Repair, providing the reel is returned postage paid.

Except to the extent prohibited by applicable law, there are no warranties or conditions, express or implied, other than those expressly set out herein. Bass Pro Shops/Cabela's shall not, under any circumstances, be liable for an amount greater than the actual purchase price of the product nor for any special, incidental, or consequential damages suffered or incurred in connection with the product and Bass Pro Shops/Cabela's does not assume, and does not authorize any person to assume for it, any obligation or liability other than those expressly set out herein.

Reel Care And Lubrication

Your new reel is designed to provide years of dependable service. But like any other precision machine, periodic cleaning and maintenance is required for continued peak performance.

Reels made today require both a lightweight oil and grease. Oil and grease should be used sparingly; too much can have a negative impact on reel performance. There are lightweight oils and greases made specifically for fishing reels that can be found at basspro.com/cabelas.com

As a rule of thumb, oils should be used to lubricate any moving part on the reel, e.g., ball bearings, bushings, handle joints, bail springs, etc. Grease should be used to lubricate the main drive gear and pinion gear.

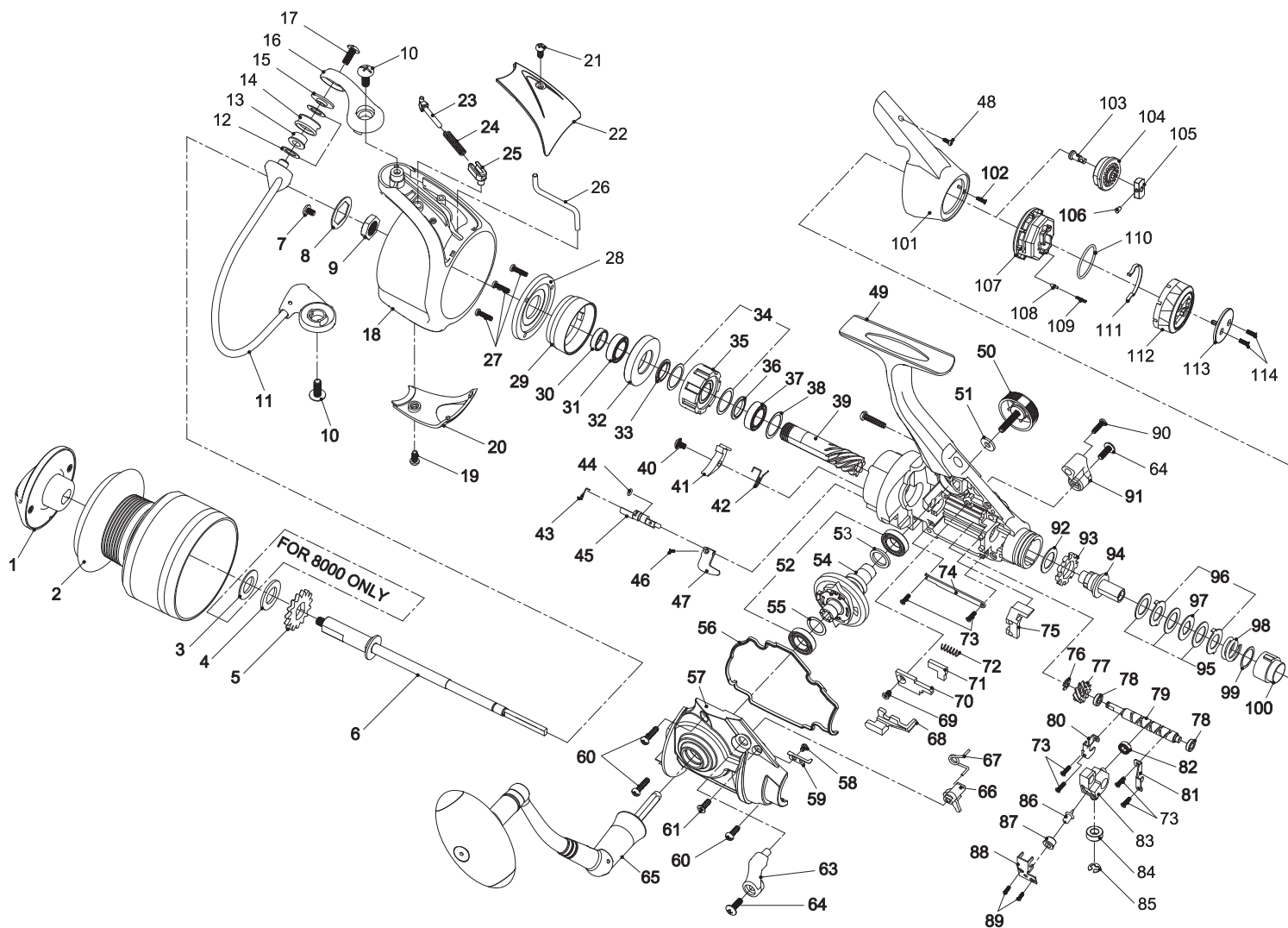
We do not recommend using any multipurpose oils. Many of these oils have properties that will attract dirt and dust to the internal parts. This may cause excessive wear and reduce the life of the reel.

After each trip, the reel should be checked for dirt or sand. If it has been exposed to saltwater, the spool should be removed and the entire reel rinsed in fresh water. Dry with a soft cloth and lubricate the reel as described above.



Bass Pro Shops®
2500 E. Kearney • Springfield, MO 65898

SALT STRIKER[®] SERIES



SST 4000/6000/8000

Key	Name	Key	Name	Key	Name	Key	Name	Key	Name
1	DRAG-BUTTON ASS'Y	25	TRIP-SPRING HOLDER	50	HANDLE-LOCK SCREW ASS'Y	75	BAIL-PAWL SUPPORTER	100	DRAG SLEEVE
2	SPOOL ASS'Y	26	BAIL-TRIP WIRE	51	CRANK WASHER	76	SELF-LOCKING WASHER	101	REAR COVER
3	MAIN-SHAFT WASHER (8000 ONLY)	27	SCREW	52	BALL BEARING	77	SHUTTLE-SCREW GEAR	102	SCREW
4	MAIN-SHAFT WASHER	28	BEARING COVER	53	SPACER	78	BUSHING	103	DRAG-KNOB SCREW
5	CLICK RATCHET	29	O.W.C. COVER	54	DRIVE-GEAR ASS'Y	79	SHUTTLE SCREW	104	DRAG-INSERT COVER
6	MAIN-SHAFT ASS'Y	30	SPACER	55	WASHER	80	FRONT RETAINER	105	DRAG-SCREW HEAD CAP
7	SCREW	31	BALL BEARING	56	COVER O-RING	81	REAR RETAINER	106	SPRING PIN
8	LOCK WASHER	32	BEARING HOLDER	57	COVER PLATE	82	BALL BEARING	107	DRAG KNOB
9	NUT	33	SPACER	58	SCREW	83	LEVEL-WIND BRACKET	108	CLICK PISTON
10	SCREW	34	TEFLON WASHER	59	CLICK SPRING	84	BUSHING	109	CLICK-PISTON SPRING
11	BAIL ASS'Y	35	O.W.C. ASS'Y	60	SCREW	85	E-WASHER	110	O-RING
12	WASHER	36	SPACER	61	SCREW	86	SCREW HOLDER	111	WIRE SPRING
13	LINE-ROLLER SLEEVE	37	BALL BEARING	63	RIGHT BAIT LEVER	87	HOLDER SLEEVE	112	DRAG-KNOB RING
14	LINE ROLLER	38	WASHER	64	SCREW	88	MAIN-SHAFT HOLDER	113	DRAG-KNOB COVER
15	LINE-ROLLER WASHER	39	PINION	65	CRANK ASS'Y	89	SCREW	114	SCREW
16	BAIL BRACKET	40	SCREW	66	BAIT CAM	90	SCREW		
17	SCREW	41	N-R PAWL	67	BAIT-LEVER SPRING	91	LEFT BAIT LEVER		
18	PICK-UP HOUSING	42	N-R SPRING	68	BAIT SLIDER	92	WASHER		
19	SCREW	43	N-R STEM SPRING	69	SCREW	93	CLICK RATCHET		
20	TRIP-BRACKET COVER	44	O-RING	70	BAIT-PAWL COVER	94	DRAG STEM		
21	SCREW	45	N-R STEM	71	BAIT PAWL	95	WASHER		
22	BAIL-ARM COVER	46	SCREW	72	BAIT-PAWL SPRING	96	EARED DRAG WASHER		
23	TRIP LINK	47	N-R LEVER	73	SCREW	97	KEYED DRAG WASHER		
24	TRIP SPRING	48	SCREW	74	LEVELWIND BRACKET RETAINER	98	SPRING		
		49	FRAME			99	WASHER		