

**ASCEND™**

**OWNER'S MANUAL  
THERMOFORMED CANOE**



# WELCOME TO THE PELICAN FAMILY!

Thank you for choosing a Pelican canoe. This canoe was made according to rigorous quality standards and according to our know-how perfected since 1968. Take the time to read this manual and familiarize yourself with your canoe to fully enjoy this product. We know that a Pelican canoe offers a unique value and that you will be fully satisfied with it. We also know that you will create memorable paddling stories worth sharing.

See you on the water!

*Antoine & Christian Elie, Owners.*

## IMPORTANT INFORMATION

MODEL: .....

DATE OF PURCHASE: .....

DEALER NAME: .....

REGISTRATION NO.: .....

PROVINCE/STATE: .....

MODEL NO.: .....

SERIAL NO. (ZEP): .....

## WHERE IS THE SERIAL NUMBER?

You can find the serial number on the back of your canoe along the outside of the hull on the right-hand corner. It includes the letters ZEP and is 12 characters long.

**Example: ZEP12345A678**



## INDEX

02	Your new Canoe
03	Getting Started
03	Materials / Manufacturing
03	Transportation
03	Pre-launch Checklist
03	Launching your Canoe
03	Mooring/Docking
04	Safety Precautions
05	Care and Maintenance
05	Storage
06	Warranty
07	Manufacturer's Declaration of Origin
08	Warranty Registration Card
09	Key features

# YOUR NEW CANOE

Take the time to familiarize yourself with some of the key components of your canoe.

## NOTE

Some model may be equipped with more or less components.

**EVERYONE USING THIS CANOE MUST READ WARNINGS, CAUTIONS AND IMPORTANT INFORMATION VERY CAREFULLY.**

## WARNING

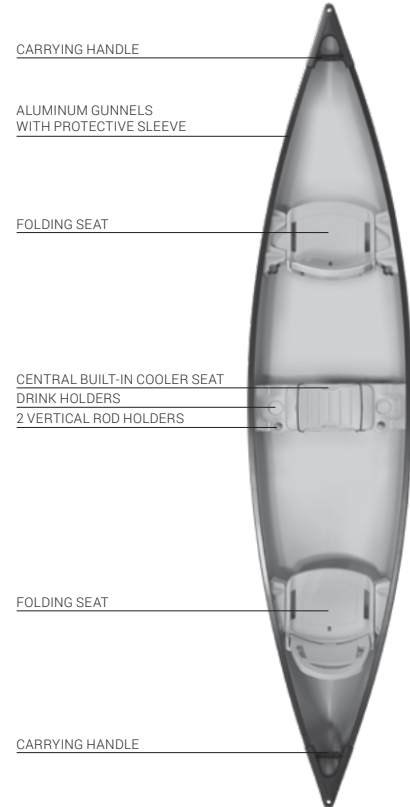
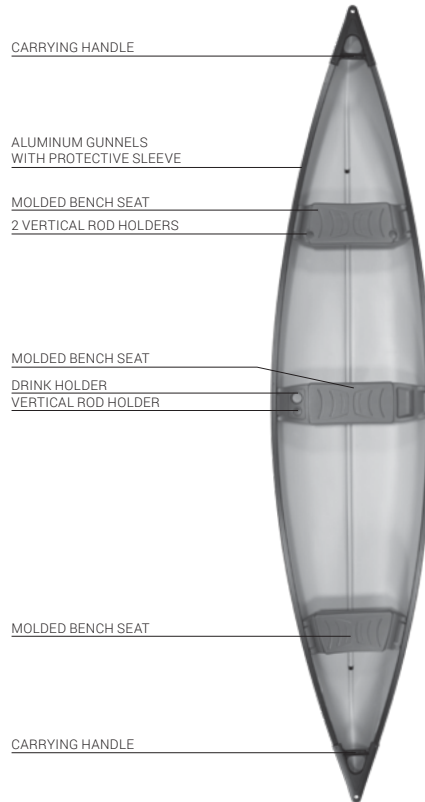
Indicates a hazardous situation which, if not avoided, could result in death or serious injury.

## CAUTION

Indicates a hazardous situation which, if not avoided, could result in minor or moderate injury.

## IMPORTANT INFORMATION

Provides useful tips and suggestions to make better use of your canoe.



# GETTING STARTED

Please read all the instructions in this owner's manual. Keep this manual in a safe place for future reference if necessary. The owner's manual includes:

## 01 IMPORTANT INFORMATION (PAGE 1)

This section is provided to record important information about your canoe. This information will come in handy if you need to contact our customer service department.

## 02 WARRANTY REGISTRATION CARD (PAGE 8)

As outlined in the warranty section on page 8, you can register your warranty electronically at [www.pelicansport.com](http://www.pelicansport.com). You can also mail the completed warranty registration card available on page 6.

## 03 MANUFACTURER'S DECLARATION OF ORIGIN (PAGE 7)

Foreign governments may require a Manufacturer's Declaration of Origin. Complete the form available on page 7 if you need one.

## 04 MATERIALS/MANUFACTURING

Your canoe is made of Ram-X™. Its great flexibility offers exceptional shock resistance. This flexibility increases with heat or with the craft's prolonged exposure to the sun but may also slightly warp the hull. The warping disappears when the hull cools and never affects the craft's performance.



Ram-X™ is a superior material that was developed and registered in 1978. It quickly became the benchmark of quality in the industry thanks to its shock resistance and ability to regain its initial shape following an impact. Widely hailed by consumers, Ram-X™ is a step above other materials used in the industry.

## 05 TRANSPORTATION

The carrying handles at both ends help in the transportation of the canoe by hand. These handles should not be used to fasten the canoe to a vehicle.

/ Make sure the canoe is firmly tied down, whether on a vehicle or trailer.

/ Before setting out, make sure all accessories have been removed and packed into the vehicle to avoid damaging or losing them.

## 06 PRELAUNCH CHECKLIST

/ Always wear a proper personal flotation device (PFD).

/ Emergency paddle(s) or oar(s) are on board.

/ Always have an emergency safety kit on hand as required by applicable laws (whistle, etc.)

/ Motor(s) and battery are in good order (if applicable).

/ If using a gasoline outboard motor, always attach it to the canoe with a canoe motor mount (if applicable).

/ All weight is properly distributed.

/ Always have one buoyant heaving line at least 15m (49'3") long and one bailer or manual bilge pump (or bilge-pumping arrangements).

## 07 LAUNCHING YOUR CANOE

/ All straps or tie-downs have been removed.

/ You step into the center of the boat when boarding, to assure that the boat remains stable.

/ Never board by stepping onto the gunnel.

## 08 TRIM ADJUSTMENTS (IF APPLICABLE, SQUARE BACK CANOES ONLY)

/ Different load conditions may require different trim angle settings. When the drive unit (propeller) is closest to the transom, it will tend to push the bow down when power is applied. If the bow digs excessively into the water, shift some of the weight to the stern and / or move the propeller further away from the transom. On the contrary, if the propeller is too far from the transom, the bow will rise excessively when power is applied. In this case, move some weight forward in the canoe and / or bring the propeller closer to the transom.

/ Performance depends on the balance between proper weight distribution, trim angle and engine horsepower.

## 09 MOORING/DOCKING

/ Always moor boat away from rocks or sharp objects.

/ Make sure that the motor is raised before mooring (if applicable).

/ Always moor your boat in water that is deep enough so that the bottom hull does not get damaged.

/ Never moor boat against a dock without proper protection (bumpers) for the sides of the hull.



# SAFETY PRECAUTIONS

We suggest that you read the information below before using the boat. Failure to follow the warnings / precautions below may lead to serious injury or death. Paddle sports can be dangerous and physically demanding. Participating in paddle sports may put you at risk of serious injury or death. You should receive qualified instructions to learn proper paddling techniques, water safety, and first aid before going boating.

- 01 **⚠️ WARNING WEATHER CONDITIONS AND WATER LEVELS**  
Check the weather and water conditions before you go boating. Your boat is designed to be used only in sheltered waters, lakes, and slow moving streams. It is not designed for whitewater use. Never go paddling in severe winds, rain, thunderstorms, choppy waters, strong currents, flood waters, or where tides will seriously affect your ability to steer the boat or return to shore.
- 02 **⚠️ WARNING PERSONAL FLOTATION DEVICE (PFD)**  
Before going paddling, read the PFD manufacturer's information pamphlet regarding the PFD and thoroughly familiarize yourself with how the PFD is to be worn.
- 03 **⚠️ WARNING ALCOHOL AND DRUGS**  
Never use or consume alcohol, drugs or any other mind altering substance that may affect your coordination, judgment or ability to safely and securely operate your canoe.
- 04 **⚠️ CAUTION SOUND-SIGNALLING DEVICE**  
The Coast Guard requires boaters to have a means of signaling other boaters of their presence. You should keep a sound device in the boat with you at all times. If possible, attach the sound device to your Personal Flotation Device.
- 05 **⚠️ WARNING STANDING UP IN THE CANOE**  
Standing up in the canoe may cause it to capsize. If the boat should capsize, please note that, in most cases, it is far more dangerous to attempt to swim to shore than to stay with the boat.
- 06 **⚠️ WARNING ABILITY**  
Know your limits. *Consult your physician before beginning your kayak training. Realistically assess your physical condition to determine how far and how long you can paddle or swim. If unsure, start your trip by paddling against the current so the return trip with the current is easier.*
- 07 **⚠️ WARNING HYPOTHERMIA**  
Dress properly for weather conditions and wear a wetsuit if necessary. *Canoe accidents in cold water are very dangerous. The loss of body heat due to immersion in cold water (hypothermia) can be fatal. Survival time in cold water can be as little as 15 to 20 minutes.*
- 08 **⚠️ CAUTION BE ACCOMPANIED**  
Always paddle with someone. *It is preferable to be accompanied in case of an emergency or accident. You should also be aware of the level of physical ability and medical conditions of people paddling with you. Always let someone know about your plan to go paddling, including your destination, how long you will be*

09 *gone, and how many people will be with you.*

## **⚠️ WARNING ALWAYS FAMILIARIZE YOURSELF WITH THE BODY OF WATER YOU INTEND TO NAVIGATE**

Learn what hours boating is permitted, whether there are any known hazardous conditions and where you can get help quickly in case of emergency or accident

## 10 **⚠️ CAUTION REGULATIONS AND LAWS**

Always follow Coast Guard regulations, boating and safety laws, and regulations and orders of various levels of government (including regional). *Consult the Coast Guard and government authorities on the proper handling of a canoe and the required safety equipment such as lighting and sound alarms.*

## 11 **⚠️ CAUTION SLIPPERY WHEN WET**

The canoe material is extremely slippery when wet. *We recommend wearing slip resistant shoes to increase traction and staying in the center of the canoe.*

## 12 **⚠️ CAUTION MOTOR (IF APPLICABLE)**

Never use a motor larger than rated on capacity tag displayed on the boat. Follow instructions that come with motor. Handle gasoline with extreme care. Avoid sudden maneuvers which could cause loss of control, and capsizing, or passengers to fall from the boat.

## 13 **⚠️ CAUTION WEIGHT CAPACITY**

Review the passenger and weight capacity limitations. Ensure the loading will be within these limits. Proper distribution of weight is necessary to ensure proper balance (trim) and performance. Each boat has capacity tag clearly displayed on the craft.

## 14 **⚠️ CAUTION EMERGENCY PADDLE(S)**

15 Always bring an emergency paddle or oar on board.

## **⚠️ WARNING**

NEVER let minors use this canoe without adult supervision.

## CARE AND MAINTENANCE

The best way to clean your canoe is to wash it with lukewarm water and mild soap. Do not use harsh abrasives. Regular cleaning will keep your canoe looking like new. Never attempt to paint the canoe because it will not stick to the hull. If the aluminum gunnels oxidize from exposure, occasionally clean them with a good aluminum cleaner / polish.

- / Caution must be used if you decide to use a pressure washer to clean your canoe.
- / Never use the pressure washer inside your canoe as it could damage accessories and stickers.
- / Only use a pressure washer on the hull below the water line.
- / Always use widest setting on the jet spray.

## STORAGE

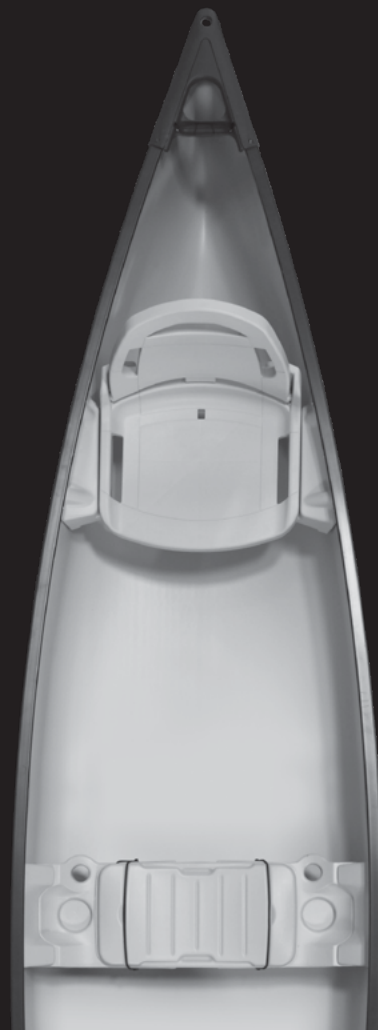
- / The best way to store your canoe is to simply set it on a flat surface. Never store it on sawhorses.
- / If outdoors, cover it with a tarpaulin.
- / Do not leave straps or ropes tightly wound around the hull for any extended period of time, especially in warmer weather.
- / The hull surface, much as the exterior finish of a car, will better retain its appearance if not exposed to the sun while in long-term storage.

### CAUTION

Gravel and small rocks tend to accumulate beneath the keelson. Unless removed, these small rocks can wear a hole in the hull. As often as possible, turn the boat on its side and while pushing the bottom away from keelson wash out any rocks or gravel.

## SQUARE BACK CANOES

Some water may accumulate between the hull and liner due to paddling, or rain. This is not a defect. To drain, tip the canoe on its bow.



# EXTENDED LIMITED WARRANTY

Your canoe is built with superior materials and in accordance to stringent quality standards. With adequate maintenance, they will give you years of reliable use. But as with most products, they are subject to wear and tear. If you eventually need replacement parts, technical assistance or product / service information, please contact our Customer Service Department having ready at hand the product's model name as well as the date and place of purchase along with proof of purchase. **For any warranty claim, please consult the section Warranty Claim Procedure.**

Pelican International Inc. offers a **2-year limited warranty** against defects in materials and workmanship **on the hull** from the date of purchase.

**Product component parts and accessories** included at time of purchase are warranted for a period of **one year (1 year)** from the date of purchase against defects in workmanship and / or materials. **A proof of purchase will be required.**

Pelican International Inc.'s warranty is valid only if the product is used for its intended purposes and for which it was designed and only extends to original purchaser (is non-transferable).

## THIS WARRANTY DOES NOT COVER:

- / Canoes used for rental or other commercial use
- / Products used that have been damaged by negligence, misuse or accident, or wear due to owner's failure to provide reasonable and necessary maintenance
- / Products which have been modified or repaired by unauthorized persons
- / Change in appearance of product due to wear, unlimited exposure or any other environmental condition
- / Products sold as "demos" or "as is" conditions, prototypes or floor models.
- / Normal wear and tear

If upon unwrapping, you discover your new product is damaged and not in good condition, please contact Pelican International Inc. as soon as possible to resolve the problem. **For any warranty claim, please consult the section Warranty Claim Procedure.**



**\*\*\* We are not responsible for damage or defects once the product has been used. Damage is defined as impact with any object or material, damage due to dropping, loading, unloading, or transport, alterations or modifications, repairs, natural disasters, fires, extreme temperatures, and any further use of your product once a claim has been reported.**

We strongly recommend you register your warranty to help us get in touch with you if any situation arise where we would need to establish contact. Your warranty can be registered directly on our website [www.pelicansport.com](http://www.pelicansport.com) or in the mail by using the warranty card provided in the owner manual of your product.

---

*This warranty is the sole and exclusive warranty by Pelican International Inc. in connection with its above mentioned products and Pelican International Inc. makes no warranties or representations, expressed or implied (including warranties of merchantability and of fitness for a particular purpose) in such connection except as specifically set in this warranty.*

*All incidental and/or consequential damages are excluded from this warranty. Implied warranties are limited to the life of this warranty. Some states do not allow limitations on how long an implied warranty lasts or the exclusion or limitation of incidental or consequential damages, so the above limitations or exclusions may not apply to you. This warranty gives you special legal rights, and you may also have other legal rights which may vary from state to state.*

# MANUFACTURER'S DECLARATION OF ORIGIN

The manufacturer further certifies that this was the first transfer of said new canoe in ordinary trade and commerce, and that all information given herein is true and accurate to the best of its knowledge.

NAME OF MANUFACTURER

Pelican International Inc.  
1000 Place Paul-Kane  
Laval QC H7C 2T2 Canada

AUTHORIZED BY



Danick Lavoie, President

## CANOE DESCRIPTION

SERIAL NUMBER (ZEP): .....

MODEL YEAR: .....

MODEL NAME: .....

LENGTH: .....

DEALER NAME: .....

ADDRESS: .....

CITY: .....

STATE/PROVINCE: .....

ZIP/POSTAL CODE: .....

Sold in the State / Province of .....

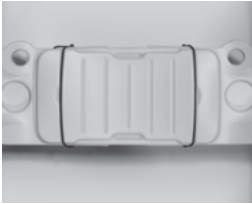
The undersigned manufacturer hereby certifies that the new canoe described below, the property of said manufacturer, has been transferred on this ..... day of ....., ..... on invoice number ..... to .....





# KEY FEATURES

Some models may come equipped with some or none of these accessories.



## CENTRAL BUILT-IN COOLER SEAT

More than a place to sit, this multi-tasking bench seat offers built-in storage, two drink holders and two rod holders.



## COMFORTABLE FOLDING SEATS

This durable seat ensures the optimal paddling position so you can paddle in comfort. Its seat back folds for easy transport.



## VERTICAL ROD HOLDERS

The perfect place to store and position fishing rods. Can be used for trolling or multi-rod fishing.