

OCEAN MASTER

OMA4000



Congratulations on your purchase of an Offshore Angler™ Ocean Master® levelwind reel. This reel was manufactured with the highest-quality components and has been extensively tested to ensure that your day on the water is more productive. Please take a moment to familiarize yourself with the performance-enhancing features of this reel before use. This will help you optimize the reel's settings and increase your odds of success. We wish you the best of luck in your future angling adventures!

Reel Specifications

Model	Bearings	Weight (oz./g)	Max Drag (lbs./kg)	Line Capacity mono/braid (lb./yds./kg/m)	IPT	Gear Ratio
OMA4000	3+1	12.5	14	14/240, 17/170, 20/150 30/400, 50/240, 65/190	25"	5.2:1

- 4-bearing system
- Powerlock™ instant anti-reverse
- 1-piece aluminum frame
- Forged machine-cut aluminum spool
- Externally adjustable magnetic braking system

Features and Operations Instructions

1-Piece Aluminum Frame and Aluminum Spool

The 1-piece aluminum frame design enhances strength and durability, allowing for sustained peak performance over time. The spool is made from lightweight aluminum for reduced weight and longer casts. These parts have been anodized to protect from corrosion.

Adjustable Magnetic Braking System

Your reel is equipped with an easy-to-use, externally adjustable magnetic brake system. This system should be used to help eliminate backlash. Simply rotate the dial on the left sideplate to increase or decrease the amount of magnetic force applied to the spool. The more force that is applied, the faster the spool stops spinning.

Powerlock™ Instant Anti-Reverse

Your reel is equipped with our Powerlock instant anti-reverse system. This is a special type of bearing that allows the handle to only turn forward. There is no play in the handle, so you have complete control during the retrieve and no loose feeling, which is important during stop-and-go retrieves.

Cast-Control Knob

The Cast-Control Knob is located on the handle side under the star drag. Its purpose is to apply continuous friction to the end of the spool shaft, assisting the braking system in maintaining the correct spool speed. This helps to prevent backlashes. To set the cast control, tie on your lure and reel it to the tip of the rod. Tighten the knob until it feels snug. Push the thumb bar. Your lure should not move. Hold the rod at a 2 o'clock position and slowly turn the knob counterclockwise until the lure starts to fall. Let the lure hit the ground and watch the spool. The spool should not spin more than 1 revolution after the lure hits the ground. If it spins more than 1 revolution, tighten the cast-control knob and repeat the procedure. If the spool does not spin after the lure hits the ground, the cast control is set too tight. Loosen the knob and repeat the procedure.

Star Drag

Your reel has a powerful star drag for pinpoint settings. The Teflon® and stainless steel drag washers provide a smooth even flow of line when a fish surges to prevent the line from breaking. Even when wet, these washers won't slip or grab. The star drag is the star-shaped wheel located behind the reel handle. To adjust, simply turn forward to increase drag or turn backward to decrease the amount of drag.

Bait Clicker

A frame-mounted bait clicker provides an audible warning that the fish is taking your line both in free spool and when the spool is engaged.

Bass Pro Shops® Fishing Reels: Limited Warranty

Bass Pro Shops® will repair or replace (at our discretion) any Offshore Angler™ reel which proves to be defective in workmanship or materials within 1 year from the original date of purchase. You must save your dated sales receipt for warranty validation. This warranty gives you specific legal rights, and you may have other rights which vary from state to state or province to province.

For reels purchased through Bass Pro Shops catalogs or Bass Pro Shops online:

- **For reel replacement only:** Return your reel postage prepaid with your dated sales receipt to the Return Center address listed on your receipt.
- **For reel repair only:** Return your reel postage prepaid with a copy of your dated sales receipt as proof of purchase and warranty validation to the Outdoor World Rod & Reel Repair® address below.

For reels purchased through Bass Pro Shops retail locations:

- **For reel replacement only:** Return your reel (postage prepaid if sending by mail) along with your dated sales receipt to the store from which it was purchased.
- **For reel repair only:** Return your reel postage prepaid with a copy of your dated sales receipt as proof of purchase and warranty validation to the Outdoor World Rod & Reel Repair address below.

Outdoor World Rod & Reel Repair
2300 E. Turner, Suite M
Springfield, MO 65803

This warranty does not cover lost parts, malfunctions, or damage due to abuse, accidents, or normal wear. Failure to clean, lubricate, and provide reasonable and necessary maintenance will void the warranty. Repairs needed to your reel due to abnormal use or modification, or after warranty expiration, are available for a reasonable charge from Outdoor World Rod & Reel Repair, providing the reel is returned postage paid.

Except to the extent prohibited by applicable law, there are no warranties or conditions, express or implied, other than those expressly set out herein. Bass Pro Shops shall not, under any circumstances, be liable for an amount greater than the actual purchase price of the product nor for any special, incidental, or consequential damages suffered or incurred in connection with the product and Bass Pro Shops does not assume, and does not authorize any person to assume for it, any obligation or liability other than those expressly set out herein.

Reel Care And Lubrication

Your new reel is designed to provide years of dependable service. But like any other precision machine, periodic cleaning and maintenance is required for continued peak performance.

Reels made today require both a lightweight oil and grease. Oil and grease should be used sparingly; too much can have a negative impact on reel performance. There are lightweight oils and greases made specifically for fishing reels that can be found at basspro.com

As a rule of thumb, oils should be used to lubricate any moving part on the reel, e.g., ball bearings, bushings, handle joints, bail springs, etc. Grease should be used to lubricate the main drive gear and pinion gear.

We do not recommend using any multipurpose oils. Many of these oils have properties that will attract dirt and dust to the internal parts. This may cause excessive wear and reduce the life of the reel.

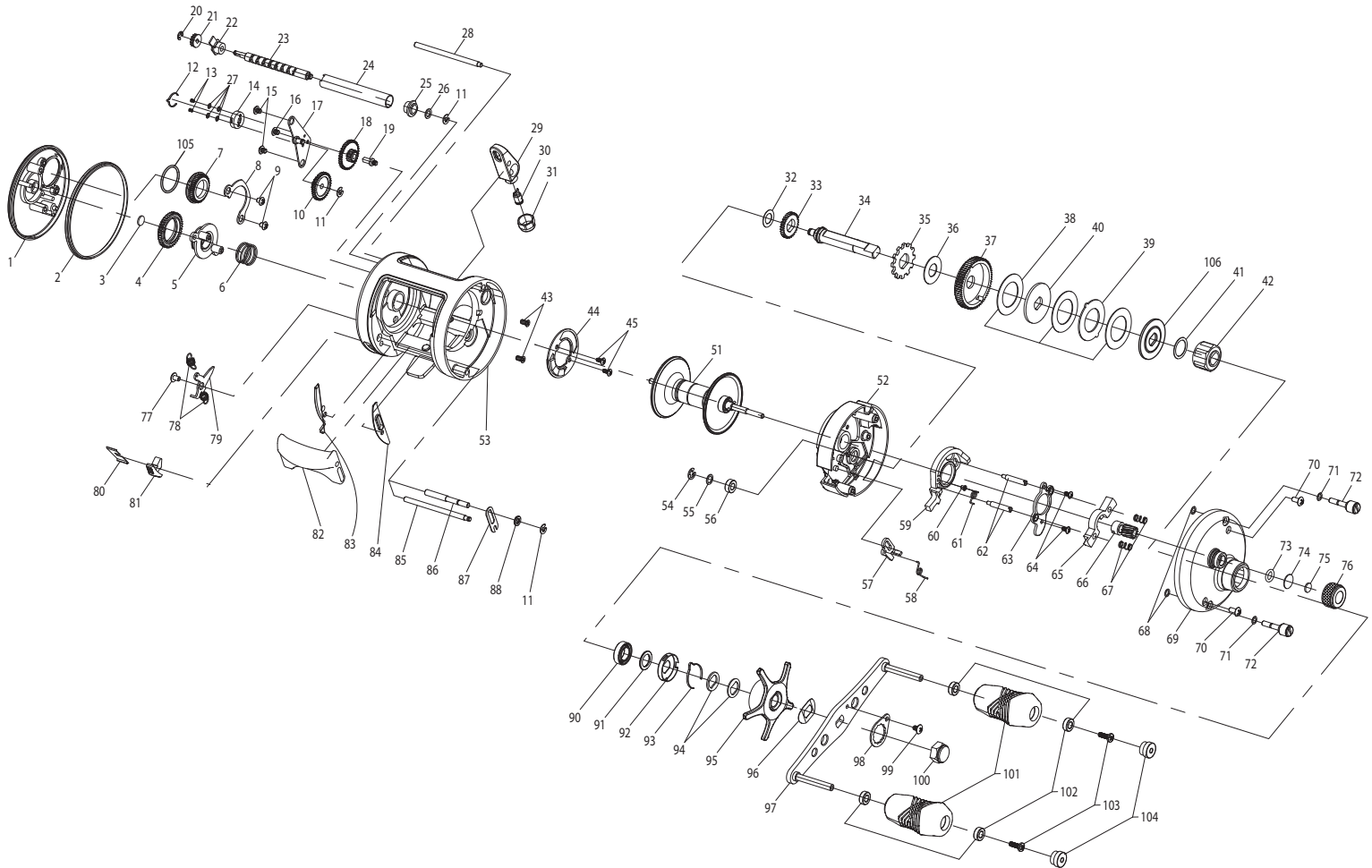
After each trip, the reel should be checked for dirt or sand. If it has been exposed to saltwater, the spool should be removed and the entire reel rinsed in freshwater. Dry with a soft cloth and lubricate the reel as described above.



Bass Pro Shops®
2500 E. Kearney • Springfield, MO 65898

OCEAN MASTER

OMA4000



OCEAN MASTER 4000

Key	Name	Key	Name	Key	Name	Key	Name
1	LEFT COVER	26	WASHER	56	BUSHING	81	PUSH BUTTON
2	COVER RING	27	WASHER x4	57	RETURN PAWL	82	THUMB LEVER
3	RUBBER WASHER	28	CARRIER PIN	58	RETURN PAWL SPRING	83	LEFT SPACE
4	DIAL BASE GEAR	29	LINE GUIDE ASS'Y	59	PINION YOKE SLIDER	84	RIGHT SPACE
5	DIAL BASE	30	LINE GUIDE PAWL	60	SPRING SLEEVE	85	THUMB LEVER PIN
6	DIAL BASE SPRING	31	PAWL CAP	61	SLIDER SPRING	86	SLIDER PIN
7	CONTROL KNOB	32	WASHER	62	PILLER x2	87	RETAINING WASHER
8	CONTROL KNOB RETAINER	33	LEVELWIND GEAR	63	PAWL RETAINER	88	SPACER
9	CONTROL KNOB SCREW x2	34	CRANK STEM	64	SCREW	90	BALL BEARING
10	TRANSFER GEAR	35	RATCHET	65	PINION YOKE SLIDER	91	CRANK WASHER
11	E-WASHER	36	WASHER	66	PINION	92	CLICK SPRING HOLDER
12	CLICK SPRING	37	DRIVE GEAR	67	SPRING x2	93	SPRING
13	SCREW x2	38	WASHER x3	68	O-RING	94	SPRING WASHER x2
14	CLICK SPRING HOLDER	39	EARED DRAG WASHER	69	RIGHT COVER ASS'Y	95	STAR DRAG ASS'Y
15	CONTROL KNOB SCREW x2	40	KEY DRAG WASHER	70	SCREW	96	CRANK SPRING WASHER
16	SCREW	41	TEFLON WASHER	71	WASHER	97	CRANK ARM WITH HANDLE RIVETS
17	TRANSFER GEAR SUPPORT	42	OWC ASS'Y	72	THUMB SCREW	98	HANDLE NUT LOCKER
18	TRANSFER GEAR	43	SCREW x2	73	O-RING	99	SCREW
19	TRANSFER GEAR STUD	44	MAGNETIC BRAKE PLATE ASS'Y	74	SPOOL SHIM	100	CRANK NUT
20	SELF-LOCKING WASHER	45	SCREW x2	75	RUBBER WASHER	101	HANDLE KNOB x2
21	SHUTTLE SCREW GEAR	51	SPOOL ASS'Y (INCL. 2 BBS)	76	TENSION KNOB	102	BUSHING x4
22	SHUTTLE SCREW BUSHING	52	RIGHT SIDE BASE	77	SCREW	103	SCREW x2
23	SHUTTLE SCREW	53	FRAME	78	SPRING x2	104	PLUG x2
24	CARRIER GUIDE	54	RETAINER	79	CLICK PAWL	105	O RING
25	SHUTTLE SCREW BUSHING	55	WASHER	80	SPRING	106	KEY DRAG WASHER