

LEVER DRAG JIGGING REEL

MASTER

OCEAN



LIMITED WARRANTY

Bass Pro Shops® Fishing Reels

Bass Pro Shops® will repair or replace (at our discretion) any Offshore Angler™ reel which proves to be defective in workmanship or materials within one year from the original date of purchase. You must save your dated sales receipt for warranty validation. This warranty gives you specific legal rights, and you may have other rights which vary from state to state or province to province.

For reels purchased through Bass Pro Shops catalogs or Bass Pro Shops online:

- **For reel replacement only:** Return your reel postage prepaid with your dated sales receipt to the Return Center address listed on your receipt.
- **For reel repair only:** Return your reel postage prepaid with a copy of your dated sales receipt as proof of purchase and warranty validation to the Outdoor World Rod & Reel Repair® address below.

For reels purchased through Bass Pro Shops retail locations:

- **For reel replacement only:** Return your reel (postage prepaid if sending by mail) along with your dated sales receipt to the store from which it was purchased.
- **For reel repair only:** Return your reel postage prepaid with a copy of your dated sales receipt as proof of purchase and warranty validation to the Outdoor World Rod & Reel Repair address below.

Outdoor World Rod & Reel Repair
2300 E. Turner, Suite M
Springfield, MO 65803

This warranty does not cover lost parts, malfunctions, or damage due to abuse, accidents, or normal wear. Failure to clean, lubricate, and provide reasonable and necessary maintenance will void the warranty. Repairs needed to your reel due to abnormal use or modification, or after warranty expiration, are available for a reasonable charge from Outdoor World Rod & Reel Repair, providing the reel is returned postage paid.

Except to the extent prohibited by applicable law, there are no warranties or conditions, express or implied, other than those expressly set out herein. Bass Pro Shops shall not, under any circumstances, be liable for an amount greater than the actual purchase price of the product nor for any special, incidental, or consequential damages suffered or incurred in connection with the product and Bass Pro Shops does not assume, and does not authorize any person to assume for it, any obligation or liability other than those expressly set out herein.

BP171500

OM14N LEVER DRAG JIGGING REEL

MODEL	BEARINGS	WEIGHT (oz.)	MAX. DRAG (lbs.)	LINE CAPACITY (lb./yds.)	IPT	GEAR RATIO
OM14N	9 (8+1)	22.7	22 (Strike)/30 (Full)	25/475, 30/385, 45/265	46"	5.8:1
				80/520, 100/455, 150/300		

Welcome to a new level of control in your angling!

Lever drag reels traditionally ensured that anglers trolling for big game species could precisely preset their drag within a certain range. That range was determined by the size/test line they were using. Offshore Angler has expanded that technology to accommodate not only trolling, but casting, and live bait fishing as well. When properly preset, the lever drag system ensures that during the fight, the angler can decrease or increase the drag, and then return to precisely the same setting. The most critical advantage is that when the lever drag is thrown all the way forward to the maximum setting, the drag will still be within a safe range for the line test.

Mounting Your Reel

The 12 size reel comes with a clamp system which reinforces the reel seat on your rod.

There are 2 screw posts fitted with a hex bolt and a shim. Screw the end of the post with the shim into the holes on the underside of the reel on either side of the foot, and tighten. Mount the reel to the rod, screwing the reel seat tight as usual. Fit the black nylon clamp over the posts, and thread on the blade head sleeve screws. Tighten with a screwdriver.

Pre-Setting the Drag

When the drag lever is in "STRIKE" position, the drag should slip at 25% of the line's breaking strength, with rod bent.

EXAMPLE: If you are loaded with 30 lb. test, STRIKE drag setting should slip at 7.5 lbs. This assures that even when the lever is moved forward to the "FULL" drag setting, that the drag is below the line's breaking strength.

To set the drag, run the line through the guides, and put a double loop in the end of the line. Run 3-4 feet of line out of the tip. Have a friend hold a spring scale with the loop hooked to it. Lift the rod until it is 90 degrees from the scale. Lift until the drag slips. Have your friend note at what poundage it slipped. If the drag needs to increase or decrease, move the drag lever to "FREE", and adjust the "PRESET" knob slightly to add or decrease drag. Return lever to "STRIKE" position, and repeat lift test.

NOTE: Always make adjustments to the "PRESET" knob with the lever in "FREE" position. When the drag slips at 25% of the breaking strength of the line when the lever is in "STRIKE" position, your drag is properly set.

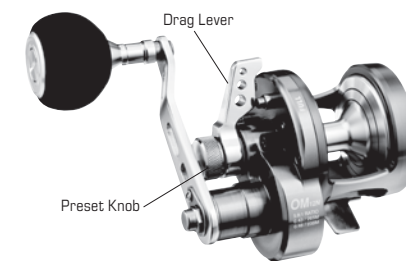
Maintenance

Your reel has been factory-lubricated, and needs very little maintenance, but a light exterior cleaning is recommended after each use to prevent salt buildup. Never DUNK or submerge your reel completely in water.

To clean the reel:

- Move the lever to "FULL" before rinsing or spraying
- The best method is to spray the reel lightly with a water displacement product such as WD-40. Allow to sit for a few minutes, and wipe it off with a clean cloth. It is not necessary to wipe the reel completely dry. A slight coating on the reel will actually protect it
- If using freshwater, just rinse lightly. Do not spray water under pressure, as it will force salt and water into your reel. Wipe dry
- Once reel has dried, move drag lever to "FREE", and engage clicker to store the reel

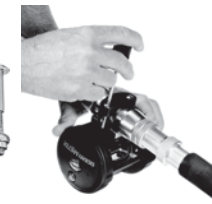
Reel Features



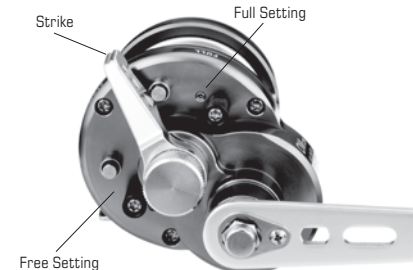
Clamp Assembly



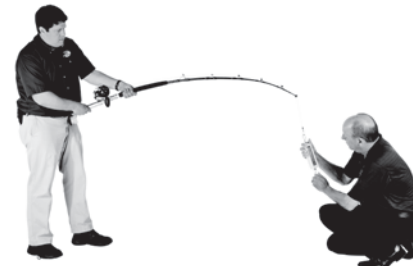
Clamp Installation



Drag Setting Controls



Setting Drag with Scale

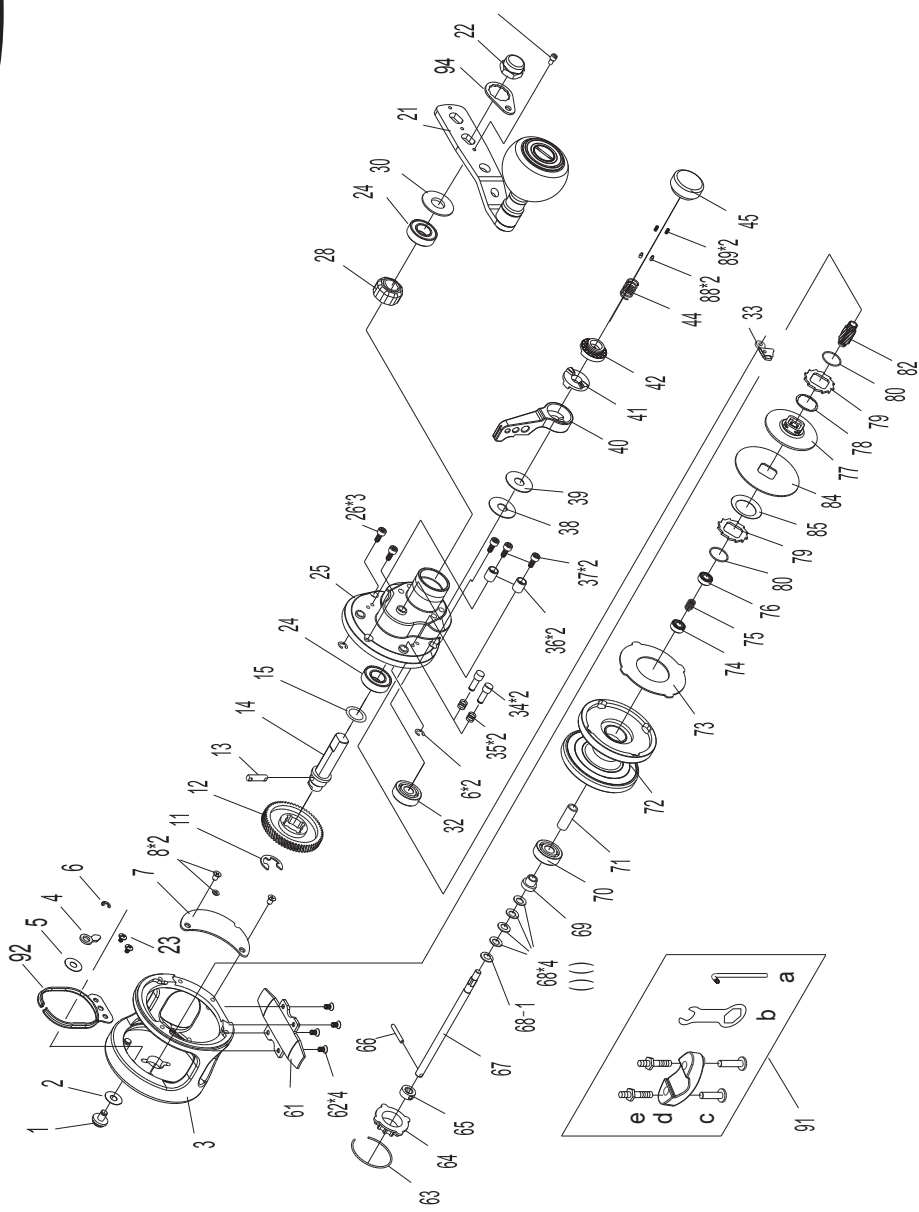




OCEAN MASTER

JIGGING REEL

OM14N



No.	Description
1	Click Button
2	Washer
3	Frame
4	Click Pawl
5	Washer
6	E Clip (x3)
7	Gear Cover
8	Screw (x2)
11	E Clip (x3)
12	Drive Gear (5.8:1)
13	Pin
14	Drive Shaft
15	Washer
21	EVA Handle Assembly
22	Handle Nut
23	Screw
24	Ball Bearing (x2)
25	Right Sideplate
26	Screw (x3)
28	One Way Roller Bearing
30	Washer
32	Ball Bearing

No.	Description
33	Dog Assembly
34	Locating Button (x2)
35	Spring (x2)
36	Stopper (x2)
37	Screw (x2)
38	Washer
39	Washer
40	Brake Lever
41	Lifter
42	Brake Cam
44	Spring
45	Pre-set Komb
61	Reel foot
62	Screw (x4)
63	C Clip
64	Alarm Cog Wheel
65	Shaft shoulder
66	Shaft Pin
67	Spool Shaft
68	Spring Washer (x4)
68-1	Washer
69	Bushing

No.	Description
70	Ball Bearing
71	Tube
72	Spool
73	Drag Washer
74	Ball Bearing
75	Spring
76	Ball Bearing
77	Brake Disc
78	Washer
79	Ratchet Gear(X2)
80	C Clip(X2)
82	Pinion Gear (5.8:1)
84	Brake Washer
85	Disc Spring
88	Click Pin (x2)
89	Click Spring (x2)
91	Tools
92	Click Spring
93	Screw (x2)
94	Retainer