



CONVENTIONAL REEL

SF4/0

Congratulations on your purchase of an Offshore Angler™ Seafire conventional reel. This reel was manufactured with the highest quality components and has been extensively tested to ensure that your day on the water is more productive. Please take a moment to familiarize yourself with the performance-enhancing features of this reel before use. This will help you optimize the reel's settings and increase your odds of success. We wish you the best of luck in your future angling adventures!

Reel Specifications

Model	Bearings	Weight (oz.)	Max Drag (lbs.)	Line Capacity mono/braid (lb./yds.)	IPT	Gear Ratio
SF4/0	4	25.5	30	30/405, 40/320, 50/245 50/950, 65/730, 80/665	28"	3.25:1

- 1-pc. CNC-Machined-Aluminum Frame
- Double-Anodized Machine-Cut Spool
- 4 Double-Sealed Stainless Steel Ball Bearings
- Low-Profile Audible Bait Clicker
- Powerful Star Drag System

Features and Operations Instructions

Rugged CNC-machined-aluminum frame

The frame of this reel was CNC-machined from solid aluminum bar stock. It is extremely strong and will not flex under load. It has been treated to prevent corrosion.

4 double-sealed stainless steel ball bearings

We used double-sealed stainless steel ball bearings in key locations throughout the Seafire reel. These bearings are designed to withstand corrosion and keep debris out so your reel functions smoothly.

Low-profile audible bait clicker

The bait clicker is located on the palming sidecover. It can be turned on by sliding the button downward.

Powerful star drag system

The Seafire reel is equipped with a star drag system. It is located under the handle on the right side of the reel. Drag power is increased as the star is rotated forward.

Offset power handle

The Seafire reel includes an adjustable offset power handle with a comfortable egg-shaped knob. The handle has been anodized to protect against corrosion.



Bass Pro Shops® Fishing Reels: Limited Warranty

Bass Pro Shops will repair or replace (at our discretion) any Offshore Angler reel which proves to be defective in workmanship or materials within one year from the original date of purchase. You must save your dated sales receipt for warranty validation. This warranty gives you specific legal rights, and you may have other rights which vary from state to state or province to province.

For reels purchased through Bass Pro Shops catalogs or Bass Pro Shops online:

- **For reel replacement only:** Return your reel postage prepaid with your dated sales receipt to the Return Center address listed on your receipt.
- **For reel repair only:** Return your reel postage prepaid with a copy of your dated sales receipt as proof of purchase and warranty validation to the Outdoor World Rod & Reel Repair® address below.

For reels purchased through Bass Pro Shops retail locations:

- **For reel replacement only:** Return your reel (postage prepaid if sending by mail) along with your dated sales receipt to the store from which it was purchased.
- **For reel repair only:** Return your reel postage prepaid with a copy of your dated sales receipt as proof of purchase and warranty validation to the Outdoor World Rod & Reel Repair address below.

Outdoor World Rod & Reel Repair
2300 E. Turner, Suite M
Springfield, MO 65803

This warranty does not cover lost parts, malfunctions, or damage due to abuse, accidents, or normal wear. Failure to clean, lubricate, and provide reasonable and necessary maintenance will void the warranty. Repairs needed to your reel due to abnormal use or modification, or after warranty expiration, are available for a reasonable charge from Outdoor World Rod & Reel Repair, providing the reel is returned postage paid.

Except to the extent prohibited by applicable law, there are no warranties or conditions, express or implied, other than those expressly set out herein. Bass Pro Shops shall not, under any circumstances, be liable for an amount greater than the actual purchase price of the product nor for any special, incidental, or consequential damages suffered or incurred in connection with the product and Bass Pro Shops does not assume, and does not authorize any person to assume for it, any obligation or liability other than those expressly set out herein.

Reel Care And Lubrication

Your new reel is designed to provide years of dependable service. But like any other precision machine, periodic cleaning and maintenance is required for continued peak performance.

Reels made today require both a lightweight oil and grease. Oil and grease should be used sparingly; too much can have a negative impact on reel performance. There are lightweight oils and greases made specifically for fishing reels that can be found at basspro.com

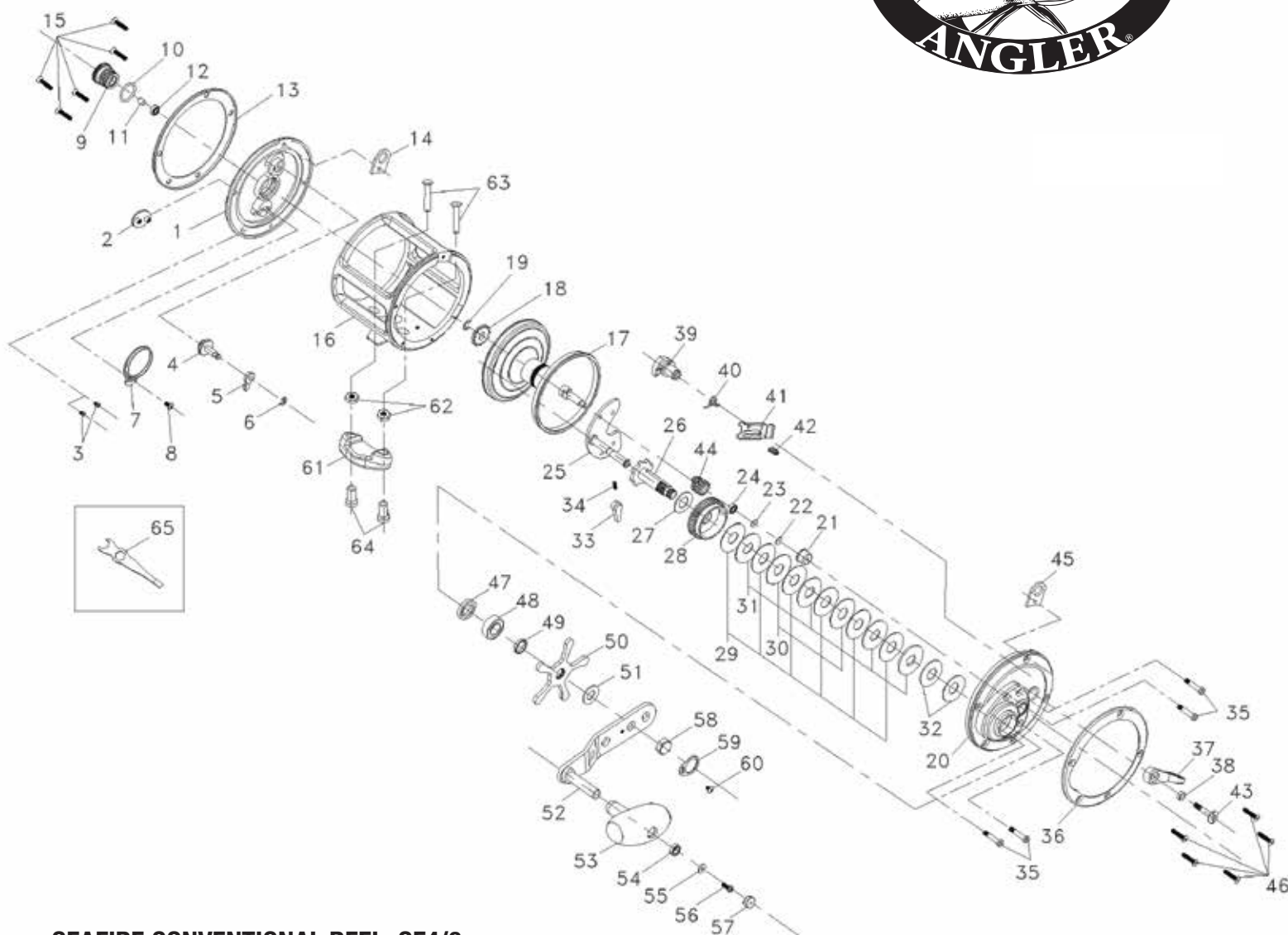
As a rule of thumb, oils should be used to lubricate any moving part on the reel, e.g. ball bearings, bushings, handle joints, bail springs, etc. Grease should be used to lubricate the main drive gear and pinion gear.

We do not recommend using any multipurpose oils. Many of these oils have properties that will attract dirt and dust to the internal parts. This may cause excessive wear and reduce the life of the reel.

After each trip, the reel should be checked for dirt or sand. If it has been exposed to saltwater, the spool should be removed and the entire reel rinsed in freshwater. Dry with a soft cloth and lubricate the reel as described above.

Wash reel thoroughly after each use with warm, fresh water.

Loosen the star drag when not in use to extend the drag washer's life.



SEAFIRE CONVENTIONAL REEL: SF4/O

NO. PART NAME

1 LEFT SIDEPLATE	19 M4 RETAINING WASHER	37 DRIVE LEVER	55 BEARING WASHER
2 NAME PLATE	20 RIGHT SIDEPLATE	38 SPACER	56 MT 2.6X5.0 SCREW
3 BP2.0X4.0SCREW	21 RIGHT BEARING HOLDER	39 CAM	57 CRANK HANDLE CAP
4 CLICK PAWL STUD	22 RUBBER WASHER	40 CAM SPRING	58 HANDLE NUT
5 CLICK PAWL	23 SPOOL SHIM	41 PINION YOKE ASSEMBLY	59 HANDLE NUT LOCKER
6 E-WASHER	24 8X4X3 BALL BEARING	42 PINION YOKE SPRING	60 MT 2.6X4.0 SCREW
7 CLICK SPRING	25 GEAR PLATE SUB ASSEMBLY	43 CAM SCREW	61 REEL HOLDER
8 MT 2.6X5.0 SCREW	26 GEAR STEM	44 PINION ASSEMBLY	62 SCREW
9 LEFT BEARING HOLDER	27 WASHER	45 HARNESS LUG	63 LOCK NUT
10 O-RING	28 MAIN GEAR	46 SIDEPLATE SCREW	64 ROD CLIP NUT
11 BUSHING STOPPER	29 DRAG WASHER	47 SPACER	65 SCREW DRIVER
12 8X4X3 BALL BEARING	30 EARED DRAG WASHER	48 19.0X10.0X6.0 BALL BEARING	
13 LEFT EXTERNAL RING	31 KEYED DRAG WASHER	49 DRAG SPACER	
14 HARNESS LUG	32 SPRING WASHER	50 STAR DRAG	
15 SIDEPLATE SCREW	33 N-R PAWL	51 CRANK ARM WASHER	
16 FRAME ASSEMBLY	34 N-R PAWL SPRING	52 CRANK SUB ASSEMBLY	
17 SPOOL SUB ASSEMBLY	35 GEAR PLATE SCREW	53 CRANK HANDLE ASSEMBLY	
18 CLICK RATCHET	36 RIGHT EXTERNAL RING	54 8.0X5.0X2.5 BALL BEARING	