



# SEA LION™

## SLS50, SLS60, SLS70, SLS80

Congratulations on your purchase of an Offshore Angler™ Sea Lion™ spinning reel. This reel is the ultimate tool in landing that trophy game fish.

### Sea Lion Reel Specifications

Model	Bearings	Gear Ratio	Weight (oz.)	Max Drag (lbs.)	Inches Per Turn	Line Cap. Mono/Braid(lbs./yds.)
SLS50	5 (4+1)	4.9:1	14.5	35	34"	12/240, 14/220, 17/170 50/210, 65/170, 80/130
SLS60	5 (4+1)	4.9:1	14.5	35	37"	14/255, 17/230, 20/190 65/230, 80/190, 100/150
SLS70	5 (4+1)	4.6:1	25	40	37"	25/240, 30/210, 40/135 80/260, 100/230, 150/195
SLS80	5 (4+1)	4.6:1	25.5	40	41"	30/270, 40/180, 50/140 80/305, 100/250, 150/230

#### Graphite Frame and Rotor

The frame and rotor were designed to be lightweight, durable, and corrosion resistant.

#### Powerlock™ Instant Anti-Reverse

Your reel is equipped with our Powerlock instant anti-reverse system. This is a special type of bearing that allows the handle to only turn forward. There is no play in the handle so you have complete control during the retrieve and no "loose" feeling, which is important during stop-and-go retrieves.

#### Machined-Aluminum Handle

Your reel comes equipped with an exceptionally strong machined-aluminum handle for peak durability.

#### Double-Anodized Spool

The spool has been double-anodized to provide years of corrosion resistance.

#### Front Drag

Your reel is equipped with a drag system to help you fight stronger, faster fish without the risk of breaking your line. The drag can be adjusted by turning the knob on the front side or spool end of the reel. To properly set the drag, you will need a spring scale. Your drag should be set at 25% of the test rating of your line. Tie a loop in the end of your main line. Run it through the guides of your rod and attach it to the hook on the scale. Pull the scale until it registers 25% of the line rating. If you are using 12 lb. test, then you should set your drag to start slipping at 3 lbs.

### Reel Care and Lubrication

Your new reel is designed to provide years of dependable service. But like any other precision machine, periodic cleaning and maintenance is required for continued peak performance.

Reels made today require both a lightweight oil and grease. Oil and grease should be used sparingly; too much can have a negative impact on reel performance. There are lightweight oils and grease made specifically for fishing reels that can be found at [basspro.com](http://basspro.com).

As a rule of thumb, oils should be used to lubricate any moving part on the reel, e.g. ball bearings, bushings, handle joints, bail springs, etc. Grease should be used to lubricate the main drive gear and pinion gear.

We do not recommend using any multipurpose oils. Many of these oils have properties that will attract dirt and dust to the internal parts. This may cause excessive wear and reduce the life of the reel.

After each trip, the reel should be checked for dirt or sand. If it has been exposed to saltwater, the spool should be removed and the entire reel rinsed in freshwater. Dry with a soft cloth and lubricate the reel as described above.

**For professional cleaning and maintenance, send your reel postage prepaid to:**

Outdoor World Rod & Reel Repair  
2300 E. Turner, Suite M  
Springfield, MO 65803

Phone: (417) 873-5274 Fax: (417) 873-5280

### Bass Pro Shops® Fishing Reels Limited Warranty

Bass Pro Shops will repair or replace (at our discretion) any Offshore Angler reel which proves to be defective in workmanship or materials within one year from the original date of purchase. You must save your dated sales receipt for warranty validation. This warranty gives you specific legal rights, and you may have other rights which vary from state to state or province to province.

#### For reels purchased through our catalogs or Bass Pro Shops online:

- **For reel replacement only:** Return your reel postage prepaid with your dated sales receipt to the Return Center address listed on your receipt.
- **For reel repair only:** Return your reel postage prepaid with a copy of your dated sales receipt as proof of purchase and warranty validation to the Outdoor World Rod & Reel Repair® address below.

#### For reels purchased through Bass Pro Shops retail locations:

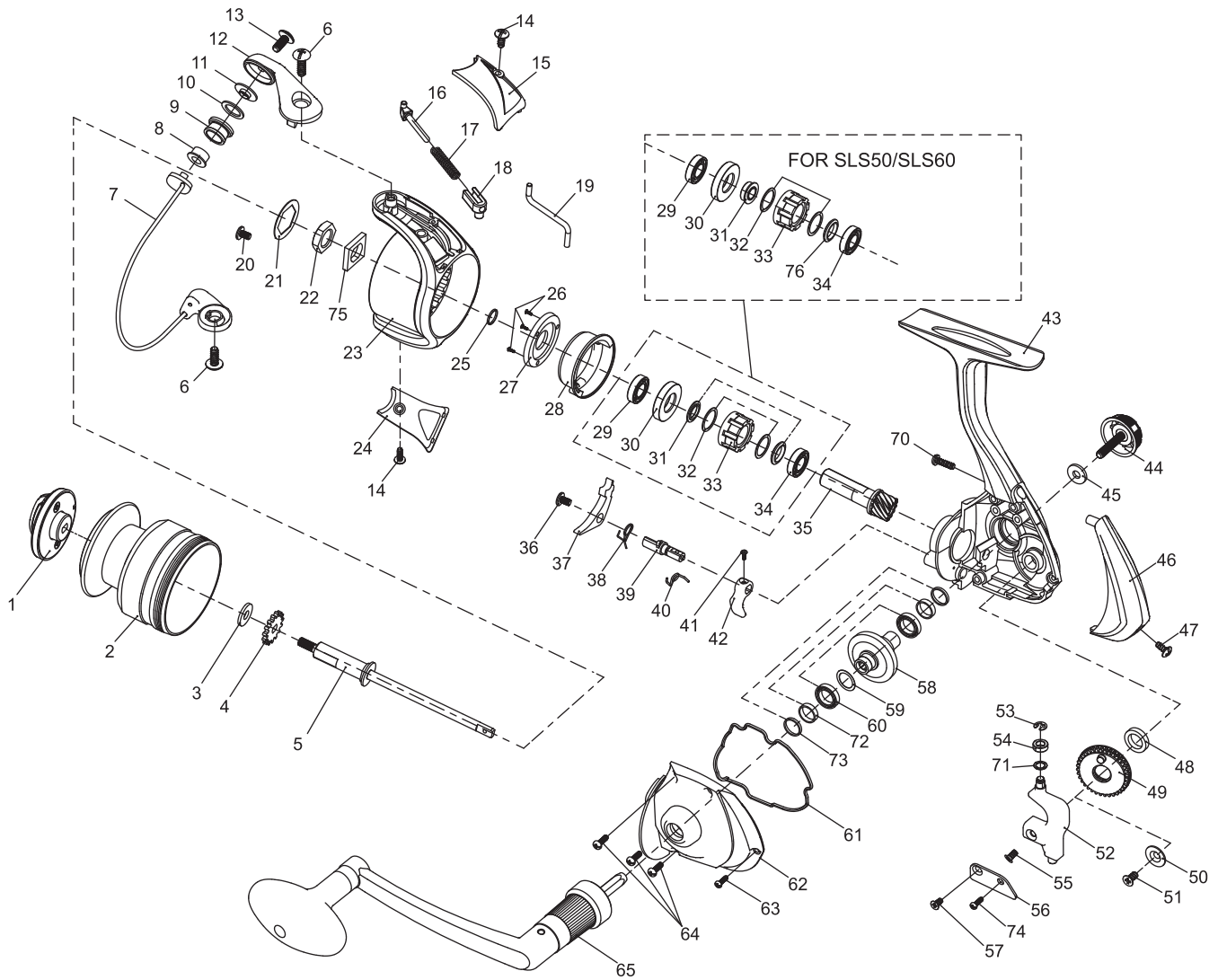
- **For reel replacement only:** Return your reel (postage prepaid if sending by mail) along with your dated sales receipt to the store from which it was purchased.
- **For reel repair only:** Return your reel postage prepaid with a copy of your dated sales receipt as proof of purchase and warranty validation to the Outdoor World Rod & Reel Repair address below.

**Outdoor World Rod & Reel Repair**  
2300 E. Turner, Suite M  
Springfield, MO 65803

This warranty does not cover lost parts, malfunctions, or damage due to abuse, accidents, or normal wear. Failure to clean, lubricate, and provide reasonable and necessary maintenance will void the warranty. Repairs needed to your reel due to abnormal use or modification, or after warranty expiration, are available for a reasonable charge from Outdoor World Rod & Reel Repair, providing the reel is returned postage prepaid.

Except to the extent prohibited by applicable law, there are no warranties or conditions, express or implied, other than those expressly set out herein. Bass Pro Shops shall not, under any circumstances, be liable for an amount greater than the actual purchase price of the product nor for any special, incidental, or consequential damages suffered or incurred in connection with the product and Bass Pro Shops does not assume, and does not authorize any person to assume for it, any obligation or liability other than those expressly set out herein.

Made in China. [basspro.com](http://basspro.com)



## SEA LION SPINNING REEL: SLS50, SLS60, SLS70, SLS80

### NO. PART NAME

1 DRAG SPOOL ASSEMBLY	19 BAIL TRIP WIRE	37 N-R PAWL	55 SCREW
2 SPOOL SHAFT	20 SCREW	38 N-R SPRING	56 LWB PLATE
3 MAIN SHAFT WASHER	21 LOCK WASHER	39 N-R STEM	57 SCREW
4 CLICK RATCHET	22 NUT	40 N-R SPRING	58 DRIVE GEAR
5 MAIN SHAFT ASSEMBLY	23 PICKUP HOUSING	41 SCREW	59 WASHER
6 SCREW	24 TRIP BRACKET COVER	42 N-R LEVER	60 BALL BEARING (X2)
7 BAIL ASSEMBLY	25 SPACER	43 FRAME	61 COVER SEAL RING
8 LINE ROLLER BUSHING	26 SCREW (X3)	44 HANDLE LOCK SCREW ASSEMBLY	62 COVER
9 LINE ROLLER	27 BEARING COVER	45 WASHER	63 SCREW
10 LINE ROLLER WASHER	28 ONE-WAY CLUTCH COVER	46 REAR COVER	64 SCREW (X3)
11 LINE ROLLER WASHER	29 BALL BEARING	47 SCREW	65 CRANK ASSEMBLY
12 BAIL BRACKET	30 BEARING HOLDER	48 BUSHING	70 SCREW
13 SCREW	31 SPACER (X2 ON SLS70, SLS80)	49 LEVEL WIND GEAR	71 WASHER
14 SCREW	32 WASHER (X2)	50 LEVEL WIND GEAR COVER	72 BUSHING (X2)
15 BAIL ARM COVER	33 ONE-WAY CLUTCH ASSEMBLY	51 SCREW	73 SEAL RING (X2)
16 TRIPLINK	34 BALL BEARING	52 LEVEL WIND BRACKET	74 SCREW
17 SLIDER SPRING	35 PINION	53 E-WASHER	75 WASHER
18 SPRING HOLDER	36 SCREW	54 BUSHING	76 SPACER